



MONTHLY MEMBERSHIP PROGRESS REPORT

District 2 S4

Results as of: 2/28/2015

GMT: HAL GRIFFIN

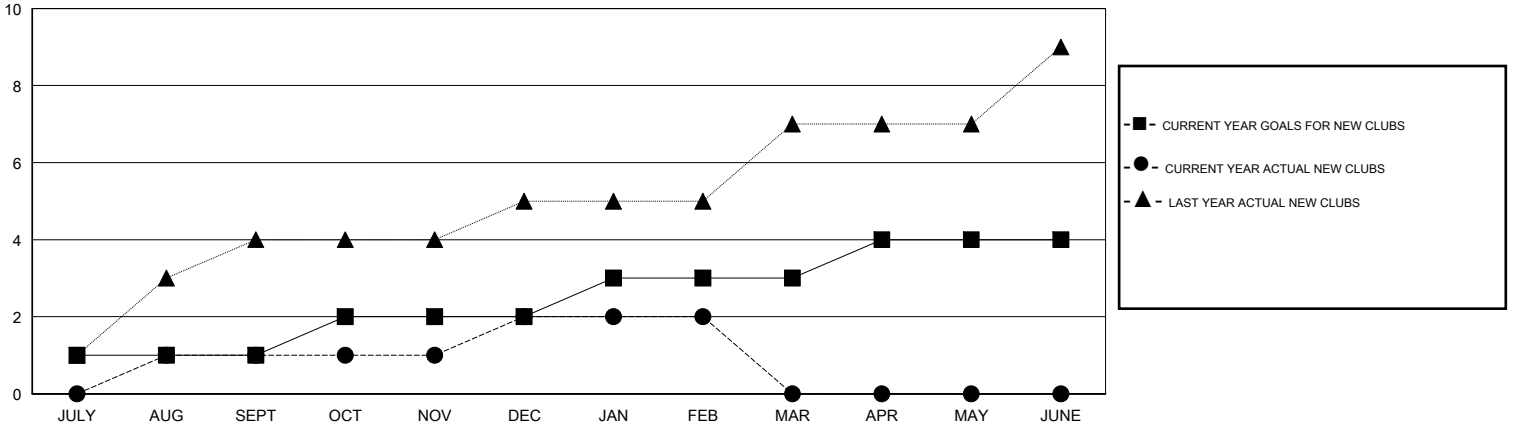
LOCATION TEXAS

GMT CA 1

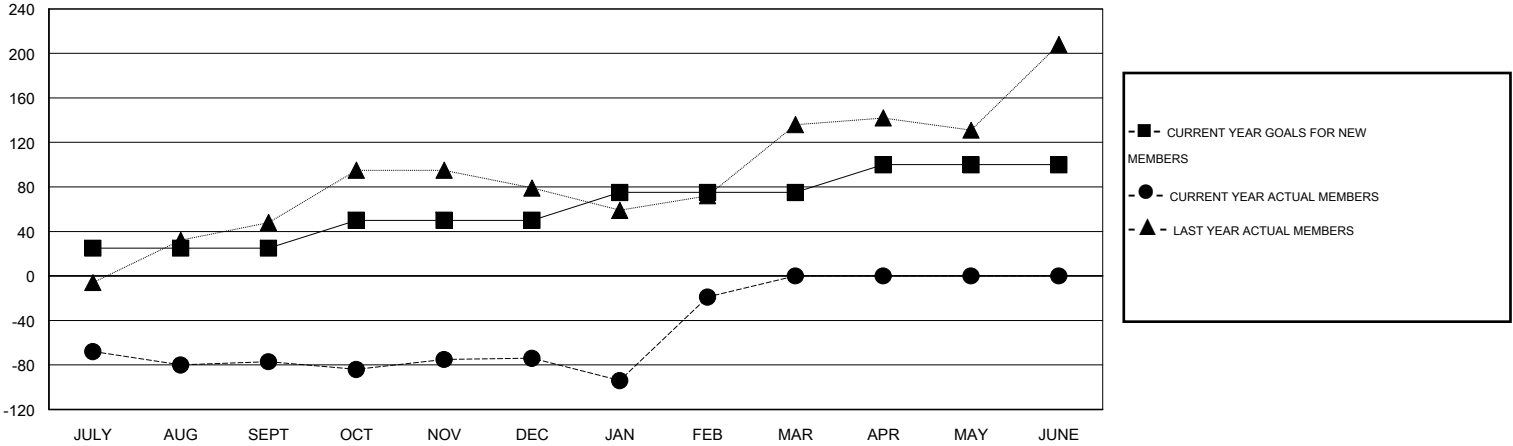
Clubs				
RESULTS FOR 2014-2015				
QUARTER	NEW CLUB GOAL	NEW CLUBS	DROPPED CLUBS	NET GAIN/LOSS
JULY/AUG/SEPT	1	1	1	0
OCT/NOV/DEC	1	1	0	1
JAN/FEB/MAR	1	0	0	0
APR/MAY/JUNE	1	0	0	0

Members				
RESULTS FOR 2014-2015				
QUARTER	NEW MEMBER GOAL	CHARTER AND NEW MEMBERS ADDED	DROPPED MEMBERS	NET GAIN/LOSS
JULY/AUG/SEPT	25	116	193	-77
OCT/NOV/DEC	25	112	109	3
JAN/FEB/MAR	25	112	57	55
APR/MAY/JUNE	25	0	0	0

GOALS AND ACTUAL NEW CLUBS CUMULATIVE



GOALS AND ACTUAL MEMBERS CUMULATIVE



DROPPED CLUBS: 1

56 CLUBS OF 85 ADDED 1 OR MORE NEW MEMBERS

GENDER DISTRIBUTION	
MALE	1,508 (60.08%)
FEMALE	1,002 (39.92%)

DROPPED MEMBERS	
DECEASED	14
CLUB CANCELLED	0
OTHER	345
TOTAL	359

[CLICK HERE FOR HEALTH ASSESSMENT DATA](#)

FAMILY UNIT MEMBERS	441
HEAD OF HOUSEHOLD	218
NON-HEAD OF HOUSEHOLD	223